

## PRODUCT NAME

Low Temperature Direct Acting Solenoid Valve of Flameproof

## DESCRIPTION OF THE PRODUCT

ALV110L2F1C9 series direct action flameproof solenoid valve can be used in hazardous area (Class I Zone 1) which has low starting air pressure, sensitive action, low power consumption and low temperature working performance. this kind of direct action valve can not only directly control the pneumatic actuator, but also can be directly installed and connected with a variety of pneumatic valves to form a high-performance pilot solenoid valve.



## APPROVED BY

## Coil Specification (C9)



IP67

Coil Enclosure Die-casting aluminum + Epoxy coated

Wiring Connector M20-1.5 or 1/2"NPT, Terminal Strip

## BODY TECHNICAL DATA

Body Extruded aluminum + anodized coated

Seal Buna N

Fasteners Stainless steel

Function 3/2 direct acting, spring return, NC,

Flow rate(Orifice) 78L/M, CV=0.08 (1.3mm)

Air Ports G1/4" or NPT

Manual Override on the body

Mounting Namur interface

Working pressure 0~8 bar

Working Medium less than 40µm filtered and dried air

Working Temp. -53°C~60°C

Environment. Indoor and Outdoor

Weather Proof IP67

Operating Voltage 24VDC≤7W, 110/220VDC≤6.5W  
24/110/220VAC≤7.5VA(50/60Hz)

Voltage Tolerance ±10%

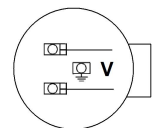
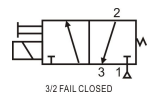
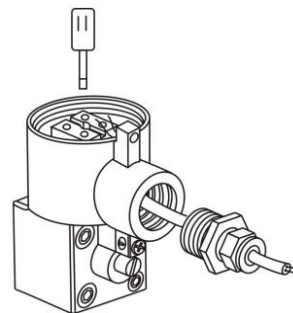
Insulation Protection H class

Insulated voltage 1000V

Duty factor 100% ED

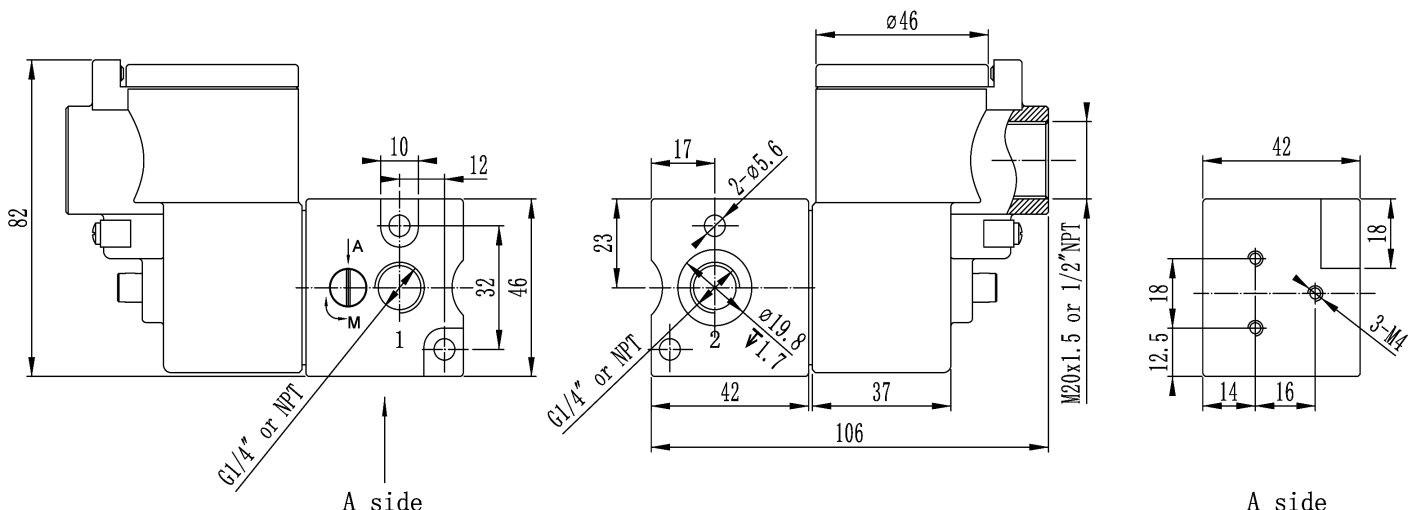
Area Classification Ex db IIC T6 Gb, Ex tb IIIC T85°C Db,  
Class I, Division 1, Groups A, B, C, D T6

## Wiring Diagram and Operating



Note: The Exd Cable Gland is not included. Enquiry please contact with us.

## DIMENSION AND DRAWING



\*For continuous improvement of the product, we reserve the right to alter the dimensions, technical data in this data sheet.

# Data Sheet

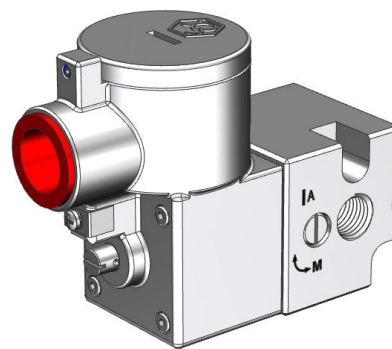
Product ID ALV210L2F1C10

## PRODUCT NAME

Low Temperature Direct Acting Solenoid Valve of Flameproof

## DESCRIPTION OF THE PRODUCT

ALV210L2F1C10 series direct action flameproof solenoid valve can be used in hazardous area (Class I Zone 1) which has low starting air pressure, sensitive action, low power consumption and low temperature working performance. this kind of direct action valve can not only directly control the pneumatic actuator, but also can be directly installed and connected with a variety of pneumatic valves to form a high-performance pilot solenoid valve.



## APPROVED BY



ATEX



IP67

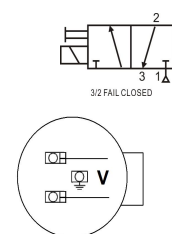
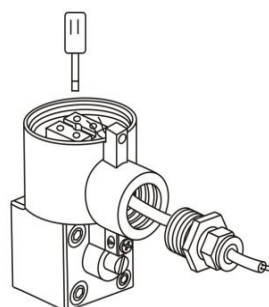
## Coil Specification (C10)

Coil Enclosure	Stainless steel 316
Wiring Connector	M20-1.5 or 1/2"NPT, Terminal Strip
Operating Voltage	24VDC≤7W, 110/220VDC≤6.5W 24/110/220VAC≤ 7.5VA(50/60Hz)
Voltage Tolerance	±10%
Insulation Protection	H class
Insulated voltage	1000V
Duty factor	100% ED
Area Classification	Ex db IIC T6 Gb, Ex tb IIIC T85°C Db, Class I, Division 1, Groups A, B, C, D T6

## BODY TECHNICAL DATA

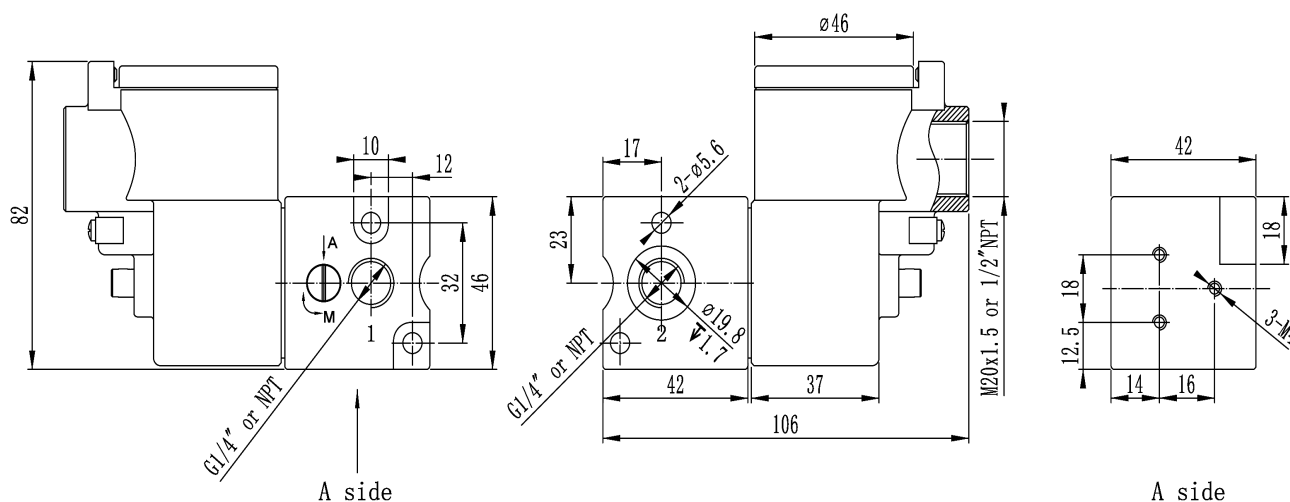
Body	Stainless steel 316
Seal	Buna N
Fasteners	Stainless steel
Function	3/2 direct acting, spring return, NC
Flow rate(Orifice)	78L/M, CV=0.08 (1.3mm)
Air Ports	G1/4" or NPT
Manual Override	on the body
Mounting	Namur interface
Working pressure	0~8 bar
Working Medium	less than 40μm filtered and dried air
Working Temp.	-53°C~60°C
Environment.	Indoor and Outdoor
Weather Proof	IP67

## Wiring Diagram and Operating



Note: The Exd Cable Gland is not included. Enquiry please contact with us.

## DIMENSION AND DRAWING



\*For continuous improvement of the product, we reserve the right to alter the dimensions, technical data in this data sheet.

ALLIED AUTOMATION

www.allied-actuator.com

info@allied-actuator.com